

aquaLoader®

BULK WATER TRUCKFILL SYSTEM

Attendant™ Terminal

- ◆ Touch Memory Fob w/PIN Number, or
- ◆ Keypad Only access w/PIN Number
- ◆ Stainless Steel (Nema 4x), Wall Mounted Cabinet
- ◆ Lockable External Door
- ◆ Stop Button, Metal Keypad and Backlit Display
- ◆ Prepaid or Credit Account Options
- ◆ Data Collection Options:
Direct Transfer at site, Modem, RF Wireless
or WIFI Ethernet Connection
- ◆ Control Single or Multiple Outlets
- ◆ Models for Bulk Water Dispensing
or Wastewater/Septage Receiving



Provides Security & Convenience for your Bulk Water & Wastewater/Septage Receiving Stations

Features of our Stations

- ◆ Year Round Operation 24/7
- ◆ Eliminates Hydrant Meters
- ◆ Controls Access for Bulk Water Sales and Waste receiving facilities
- ◆ Eliminate Billing and Delinquent Accounts with the Pre-Pay Options
- ◆ All Water Control Valves have NSF Listed Fusion Epoxy Coatings
- ◆ AWWA Approved Water Meter with NSF Coating
- ◆ Water Meter Complies with AWWA C701-Class 11 (Accuracy +/- 1.5%)
- ◆ Integral High Hazard RP Type Backflow Preventer (if required)
- ◆ All Water Outlet Piping Fully Drains at End of Fill Cycle (complies with CSAB64.10)
- ◆ Enclosures used for Skid Mounted stations are Tested and Certified to ASSE 1060 Std, Class 1
- ◆ Single or Dual Fan Heaters with Separate Thermostats
- ◆ Optional "No Power/Low Temp" Alarm
- ◆ Ideal for Permanent or Semi-Permanent Installation
- ◆ Shipped Fully Assembled and Ready to Install
- ◆ DIY Packages also available

PROTECT YOUR WATER SYSTEM - Use AquaLoader® Bulk Water Truckfill Stations
Fully Automated - Pre-Paid with No Billing Required or Invoice with Credit Limit
© BIRKSCO

Tel: 905-691-0981 Fax: 888-851-4467 e-mail: sales@birkSCO.com Web: www.birkSCO.com

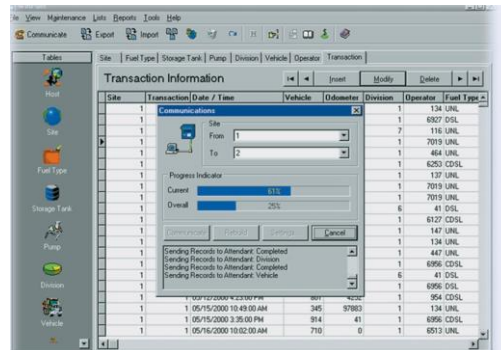
aqua Loader®

BULK WATER TRUCKFILL SYSTEM

TFS-Attendant Terminal

Terminal Features:

- ◆ Keypad entry only as standard
- ◆ Optional Stainless Steel Touch Memory Key Fob for Driver or Vehicle Identification
Use Fob with a PIN Number (optional) for greater security
- ◆ Metal Keypad
- ◆ Backlit LCD display
- ◆ Dimensions – 16” Wide x 20” High x 10” Deep
- ◆ Communication RS 422/485 Serial port
- ◆ Pre-set amounts of water can be selected via the Keypad or flow will simply start to a max vehicle quantity or to max credit that is available when account is authorized.
- ◆ On screen display of amount of water dispensed during fill cycle or amount of liquid collected when used for Septage receiving
- ◆ The STOP Button can be used at any time to stop the transaction



Software Features:

- ◆ Desktop PC Software, single and multi site versions plus single or multiple outlets at each site
- ◆ Server based version with database on server and software on a network connected PC
- ◆ 1,000 Accounts, 1,000 Operators (total), 1,000 Vehicles (total) and up to 2,000 Transactions are stored between downloads plus all of these totals are expandable if required.
- ◆ Credit or pre-paid accounts
- ◆ Transaction records include: Date and time, Site ID, Account ID, Account Name, Quantity of water dispensed/collected and Unit of Measurement
- ◆ Many standard lists and reports with user specified date ranges sorted by:
Site, Vehicle, Operator (driver), Transaction, Customer/Department
- ◆ File Transfer direct at site in a CSV format to your laptop that is running the Software
- ◆ Optional File Transfer by modem, WIFI Ethernet Connection or RF Wireless
- ◆ Optional receipt printer
- ◆ Export file allows export of data to your accounting software
- ◆ Single or Multi Site User License plus optional Read Only Licenses
- ◆ Lifetime telephone or email support